

I am first going to state that I believe I have the solution for the San Francisco casque of The Secret. I believe in my heart that it is dead on correct. I may be wrong, but I wouldn't be the first in this hunt to be so.

That said, everything – and I mean everything - just feels right about this.

Given that I am a local resident of the San Francisco Bay Area, I was excited to confirm the location by physically digging. I have asked for official permission to dig. Given the sensitivity of the location, it was the absolute right thing to do. I was denied permission by a California Park official early this past week. It was the right decision, and I think that you'll understand why when you might see the location that I propose. I was told that "not even a metal detector would be allowed onto the lands", which I assured the official from the CA States Parks agency that given the physical nature of the casque (plexiglass and ceramics), I had no intention of using one. I was also reminded by the official that specifically the website for this area states that "collecting or destroying anything in the park, including mushrooms, is prohibited". Mushrooms? Lolz. I have appealed back to the official and haven't heard back. But it seems too much like begging to me, and that's not my style. Besides, their reasons are valid and sound.

Likewise, I have emailed my entire solution onto the producers and hosts of a certain TV show two days ago. I give a lot of credit to that TV team in reviving the excitement around The Secret and their respectful treatment of Preiss & Palencar. Their coverage is the whole reason that I got into this hunt. For me, I was hooked after catching the Milwaukee/Florida episode while flipping through channels in my hotel room one evening on a business trip. I was hoping that surely they could persuade the correct authorities to let me dig. But that hasn't sat right with me either. Why should they suddenly be given access and not anyone else?

So I will post my evidence of where I truly believe the casque to be... or it may not be there at all.

I am not going to lament the fact that I didn't get to try to dig for the casque, find the key, share in a gem or get my face on TV. For me, it was definitely never about the latter! Instead, it is, and continues to be, about the hunt and the chase. The process has instilled in me the same feeling that I first got by Geocaching with my kids. I guess we're all just treasure seeking junkies in some way, chasing that same elusive feeling that we may never quite achieve. So I will have to be content to put my information here.

Lastly, my solve is not the first that has been proposed for this location and was reinvigorated by an exchange of ideas on the web board PBworks. Thus, a very large shout out to PatrickG – who I have tried to contact in the last few days without success. My deciphering of the clues that lead to the actual solve are quite a bit different and unique to my own thoughts as I hope you will see.

Whether my evidence of the casque location is right or wrong, I sense that people may want to dig based on the information that I am posting. There is a palpable excitement and anticipation of finding a casque as is evidenced by the random holes popping up in and around proposed finds such as Golden Gate Park. Thus, I hope by putting my information here that people respect the site of where I am proposing. Mr. Preiss did not want us to dig in a cemetery. Technically though not a place of burial, my proposed site certainly contains ghosts of the past and I urge people not to violate this without having an official way of probing and digging.

Is it there? Is it not? Casque, no casque. Jewel, no jewel. I'll just have to shrug. At the end of the day I have been enriched in the knowledge that I have gained from my searching and learning the history of this place that I will disclose below. It is a remarkable place with a remarkable story.

I believe the San Francisco casque from the Secret to be buried adjacent or very near one of two flagpoles bases on Angel Island in the grounds of the Immigration Station, which has been named a National Historic Landmark. I will walk you through my solve below.

Without going through too much excruciating detail on some of the older, "known" information, I am referring to Image 1 , Verse 7 from Mr. Preiss's book The Secret and Mr. Palencar's corresponding art work.

Much of the work of the early credit on the solve goes to the hard work of many people before me which have substantially narrowed down the search field.

A. What had been known / assumed (universally accepted by most):

- Verse 7 corresponds to Image 1
- The 37/38 in the main figure's hair and 121 and 122 (the latter two in roman numerals) on her robe are coordinates associated with latitudes and longitudes of the San Francisco Bay Area.
- The intricate pattern on her robe is Golden Gate Park – another sign that the casque is in San Francisco. I believe that many of the people mistake this for the final resting place of the casque.
- The flower is the identical shape of Angel Island in reverse
- The 'G' and 'h' on her robe (in reverse) likely corresponds to Ghirardelli near the piers in San Francisco Bay. The reversal of these two letters in the original painting likely indicates that something in the puzzle might be reversed, such as the shape of the island.
- The shape of the table post is very reminiscent of a cable car.
- The watch is set to 6 o'clock , a nod to the sixth month of June, which has a pearl as it's gem. The pearl is the gem at stake in the casque.

B. Other items (accepted by some):

- The same shape of the table post may be interpreted as the tops of the lamp posts on the Aquatic Park pier.
- Aquatic Park is also a place to see the 'Gh' of the Ghirardelli sign on the business that abuts the park. Ghirardelli produces chocolate so this interpretation is in line with the phrase "at stone wall's door, the air smells sweet".
- "Three posts high" – likely mean the three masts of the Balclutha – a three-masted square-rig ship moored at the Hyde Street Pier near Aquatic Park.
- Justice may be perceived as Alcatraz – but given my suggested site for the burial spot – it may also refer to San Quentin which I believe can be seen from the burial site.
- Likewise, the stone tower with the bars across the window can be perceived as Alcatraz or more commonly known to locals and Nicolas Cage/Sean Connery fans as "The Rock".

- From the book comes this quote regarding the jewels associated with the casques, *"From far Cathay, the dragon's Pearl: Chaste, perfect as the silver moon."* Cathay is an alternative historical name for China in English. Originally, this name was the name applied by Central and Western Asians and Europeans to northern China; the name was also used in Marco Polo's book on his travels in China. Thus, there is a strong association of this casque with Chinese immigrants.

C. Items that I think are unique to my solve for the San Francisco Casque

- The dress and gem are in the shape of the Chinese Immigration Monument – which was commissioned by famed San Franciscan Victor 'Trader Vic' Bergeron in 1979. The Monument originally stood on the site of the burned down administration building (which was razed by the fire in 1940) and was likely there when Mr. Preiss planted the casque nearby.
- This monument, of course, is at the Chinese Immigration station on Angel Island in San Francisco Bay.
- Sometime later past 2005 (as evidenced by attached photographs), the monument was removed from that site and has reappeared at the top of the hill overlooking the old immigration station pier. It is currently located next to the hospital on top of that hill. That said, the monument was clearly present in the main plaza overlooking the site when Preiss was in the island.
- The round symbol (which is likely a top down view of the peony flower – the national flower of China) at the top of the Chinese Immigration Monument represents the pearl in Palencar's painting.
- The large Chinese symbols in two columns of the monument may be the "Education" mentioned in verse 7 (Justice being Alcatraz or San Quentin if not in the immigration barracks). Translation from a wikipedia for the monument is provided as "Leaving their homes and villages, they crossed the ocean only to endure confinement in these barracks. Conquering frontiers and barriers, they pioneered a new life by the Golden Gate."
- These two large rows of large Chinese symbols on the monument appear to match the odd marking down the edges of the Chinese robe in Palencar's picture.
- The shorter rows of smaller letters on the Monument appear to match the stacks of blue blocks on her sleeves. The number of letters and blue blocks is approximately 10 (or 11).
- In Palencar's painting, her fingers seem to point to specific places on the blue blocks thus appear to match to the words on the Chinese Immigration Monument.
- In the painting, her right hand (pointing to the left sleeve) points three blocks down. Roughly translated, those top three symbols in the monument short stack translate loosely to "Angel Island". Technically the top symbol means heaven/air and the second symbol means "to do

something” – combined it means “Angel”. The third symbol translate as the word “Island” on the monument.

- Likewise, in the painting, her left hand points to the right sleeve 4 blocks down. On the short stack of letters this corresponds to “1900”.
- If one interprets her left hand instead pointing to the large column of letters on the left, the fourth symbol down translates to the word “Ground”.
- Collectively her fingers point to words that can be interpreted on the monument as “Angel Island Ground”.
- The top half of her robe with her arms folded at her waist looks collectively like a bell. There is a maritime bell, used to help guide ships through the SF fog, at the Chinese Immigration Station (sometimes referred to as the North Garrison) that is mere feet from the spot the casque is buried.
- There are a series lights on unique lampposts that have been on site since the inception of the immigration station. Each of these lamp posts have white orbs (5 or 6 per post), and thus very much resemble the white orbs (moons) floating at the top of Palencar’s painting.
- Likewise, the orbs are held onto the lamp post with unique scrolls that are quite reminiscent of the pattern on the stem of the flower in the painting.
- These spiraled lamp scrolls also appear to have an extra metal node sticking out that seems to resemble or can be interpreted as the leaf on the stem in the painting.
- Though everyone likes to refer to the flower on the table as a rose, I would suggest that it might be a Peony which has not fully opened. This is indicated by the slight pink tinge typical on Peonies and not the dark red color typically represented by roses. The Peony is the national flower of mainland China.
- In addition to the “Education” on the monument. Education may also refer to the Chinese poems scrawled onto the wooden posts inside of the barracks where the Chinese were detained. Quite often these poems talked about the lack of justice – so it could be that the poems are “Education and Justice” for all to see as well.
- I believe the odd shaped blue space in the rock over her right shoulder is the side profile of a cable car rail. Cable cars also terminate and turn around near aquatic park.
- Unlike other casques, I don’t necessarily believe all clues have to be immediately seen close to the solve. Some of these words simply may guide us to the correct city or a part of the city where something needs to be done. I think that the “Gh”, high posts three and object of Twains attention “likely a steamboat named Eureka” indicate that you are to board a ferry for arrival onto Angel Island. A ferry (or boat) is the only way on/off of Angel Island.

- “Is an object of Twain’s attention”. Mark Twain was initially attracted to come out to the West for the gold rush but took a losing stake in a silver mine that, quite literally, did not pan out. So it is amusing that there is also a Steam ferryboat (steam ferries or riverboats are often associated with Twain) at Hyde Pier known as “Eureka” docked in Aquatic park. “Eureka” indeed!
- “Sounds from the sky, Near ace is high” is undoubtedly a reference to the Golden Gate Bridge on which noisy traffic bustles across at all hours of the day. Highway 1 merges with US Route 101 just south of the bridge, you cross the bay on the Golden Gate Bridge before it splits off into separate roads again. If traveling on the ferry to Angel Island from the piers, you would undoubtedly hear sounds from the sky nearly 220 feet up in the air on Route 1, the Golden Gate Bridge.
- “Running north, but first across” is an indication that you must first go across the San Francisco Bay and stay on the north side of the island at which the Immigration Station is located.
- Finally... “Giant Pole, Giant Step, to the place the casque is kept.”
 - The immigration center is likely a very different place today as opposed to when Mr. Preiss visited. A major renovation program took place in 2010. See attached pictures below. Prior to 2010 and after 1940 this part of the site was fairly desolate.
 - There were two flags poles – or “giant poles” that were in front of the immigration station in the old days. The picture of the monument taken in 1979 seems to indicate that the flag poles were already down, though we cannot ascertain that the photo was taken later and given the 1979 label. Either Preiss used historical photographs to assume that the bases held flagpoles, or it was simply clear from the two large concrete pilings that’s where they once stood. (<https://shaheemjef.wordpress.com/immigration-and-migration/>).
 - A 360 panorama photo that I found in 2005 confirms that they were still down. (<http://360panos.com/panos/ImmigrationStation.php>)
 - In the 2005 photograph, of the two flagpoles, to the right as you face the station appears to have a concrete path near it. The one to the left is closer to the water, with a large step down and a large concrete curb – perhaps the “Giant Step”.
 - I cannot tell if the flagpole base on the left has a Giant Step (i.e. long concrete curb) next to it. (<http://360panos.com/panos/NorthGarrisonLanding.php>)
 - At some point after the 2005 photograph, a flag was reinserted into the right pole base and the concrete path in front of the base and appears to have been repaved to be closer to the barracks (and behind the two large palm trees).
 - Quite a bit of dirt appears to have been removed to build the new curb presumably during the 2010. It may be possible that the renovation crew uncovered the box while renovating the new grounds and had no idea what it was.

- Thus, If the casque is still intact, it is likely next to one of the two original flagpole bases, perhaps on the side closer to the water as that is where the “Giant Step” or large concrete curbs are.
- Importantly, the “Giant Step” referred to by Preiss may be the actions of the Chinese immigrants entering into the country – a Giant Step from one life in China and a life and future into their new country.
- Regardless, it is highly likely that the casque is indeed buried immediately next to one side of the base of either of the flagpoles – much in the same way the casque was buried near home plate of Langone Park in the Boston casque.

Lastly, I remind you to please read the note at the top of this. It is exceptionally important that IF you buy into my theory and solve, that the appropriate measures are taken to once again ask for permission (and hopefully be granted) to dig and to preserve the sanctity of this remarkable historical site.

Thanks,
David

Suhy's San Francisco Casque Solve of The Secret

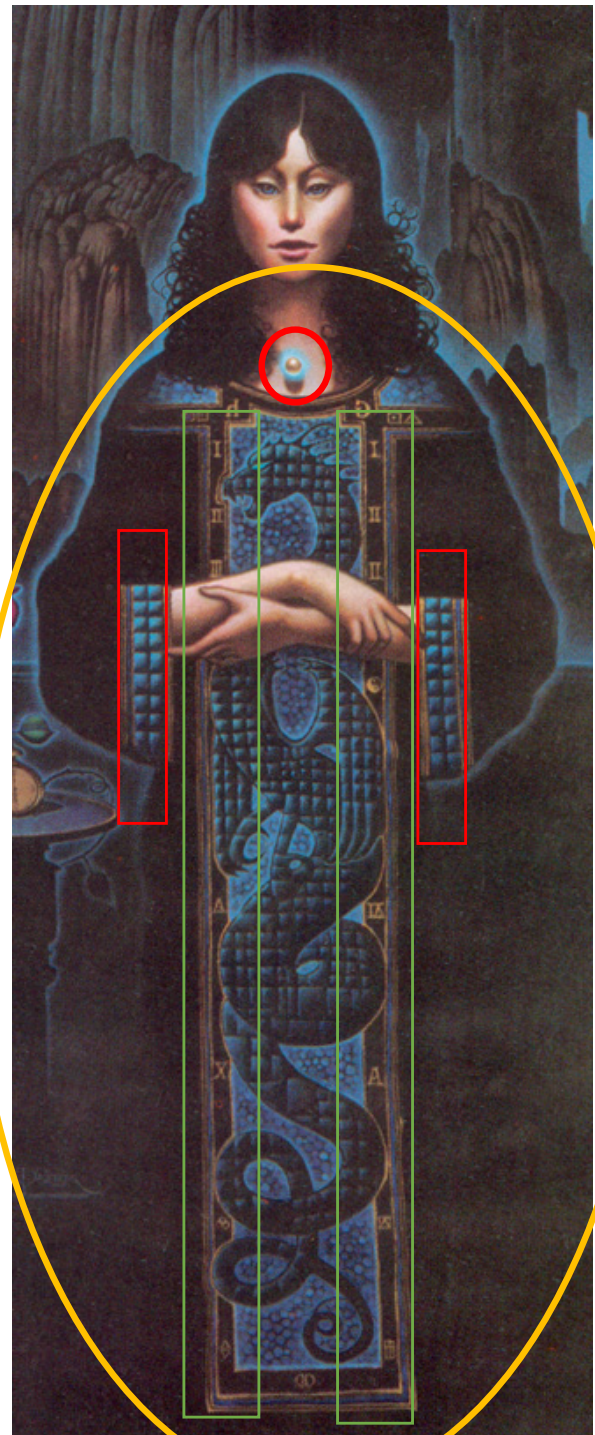


Verse #7

At stone wall's door
The air smells sweet
Not far away
High posts are three
Education and Justice
For all to see
Sounds from the sky
Near ace is high
Running north, but first across
In jewel's direction
Is an object
Of Twain's attention
Giant pole
Giant step
To the place
The casque is kept.

Suhy's San Francisco Casque Solve of The Secret

Chinese Immigration Monument
now on hill overlooking
immigration dock site





She's pointing down three squares with her right hand and four squares down with her left hand.

The top 3 characters in red rectangle (as pointed out by her right hand) translate loosely to "Angel Island". Technically the top symbol means heaven/air – the second "to do something" – together roughly translated as "angel"

The top 4 characters in green rectangle (pointed out by her left hand) translates loosely to the number "1900"

Alternatively The fourth symbol down in the middle row in the yellow square translates to the word "Ground"

Thus, I interpret the finger pointing as:
'Angel Island Ground'





Non standing Flag
'giant pole' was here

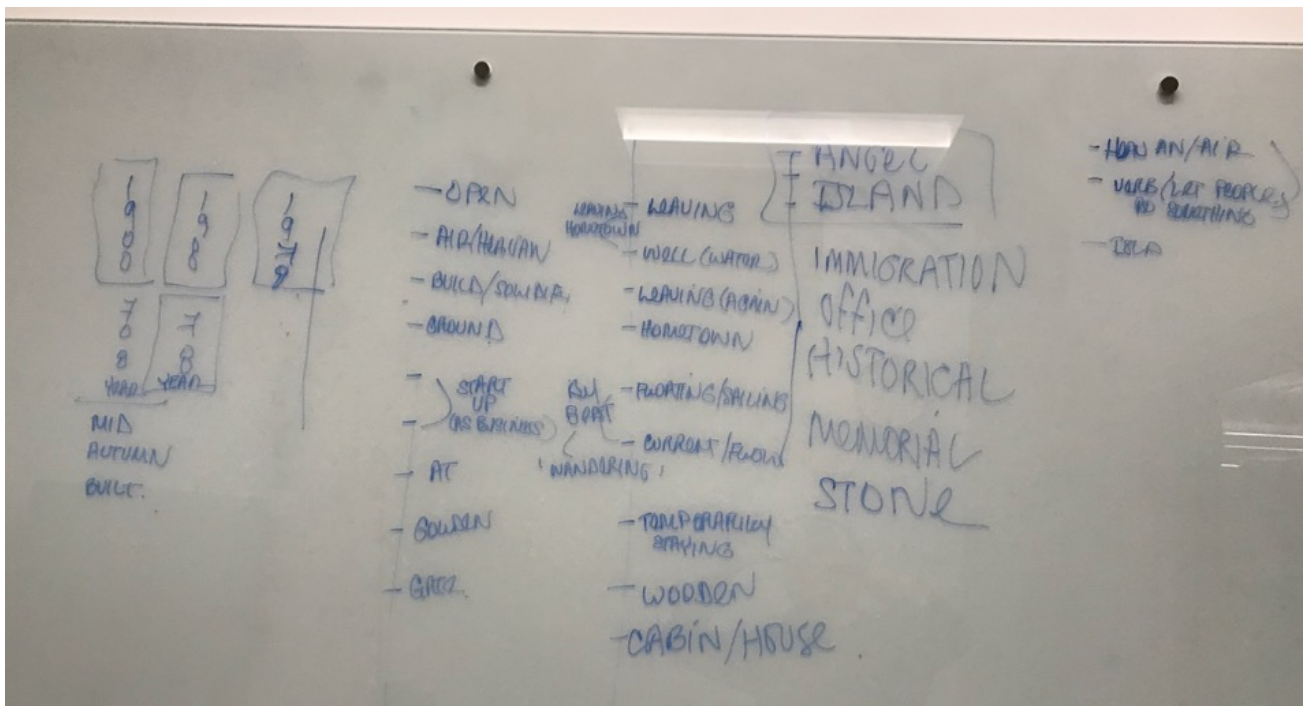
Original position of monument with inscription (Education):

"Leaving their homes and villages, they crossed the ocean only to endure confinement in these barracks. Conquering frontiers and barriers, they pioneered a new life by the Golden Gate."

Suhy's San Francisco Casque Solve of The Secret



Date Unknown: post-1979 - pre-2010



My whiteboard reading of the characters with help from my friend and colleague WJ

Suhy's San Francisco Casque Solve of The Secret

Don Bain's 360° Panoramas
Panoramas of California North of the Golden Gate



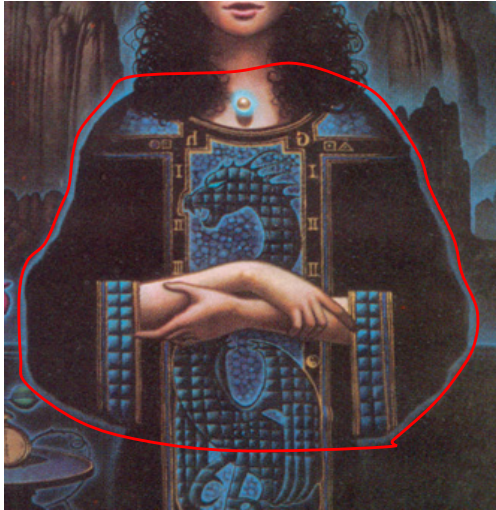
Position of the monument in 2005

Don Bain's 360° Panoramas
Panoramas of California North of the Golden Gate

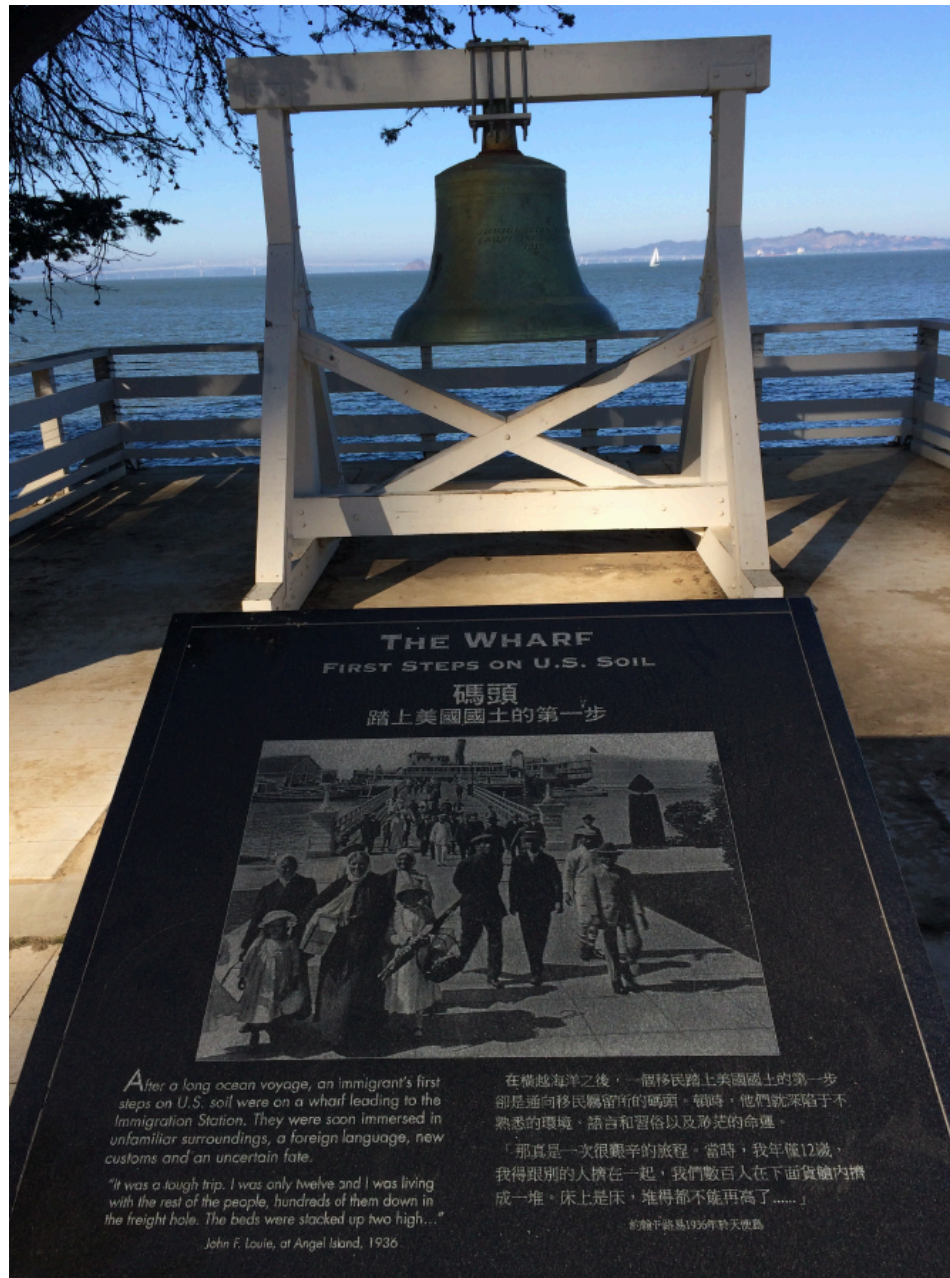
360° Panoramas of the North Bay Counties
Panoramas of Angel Island - One



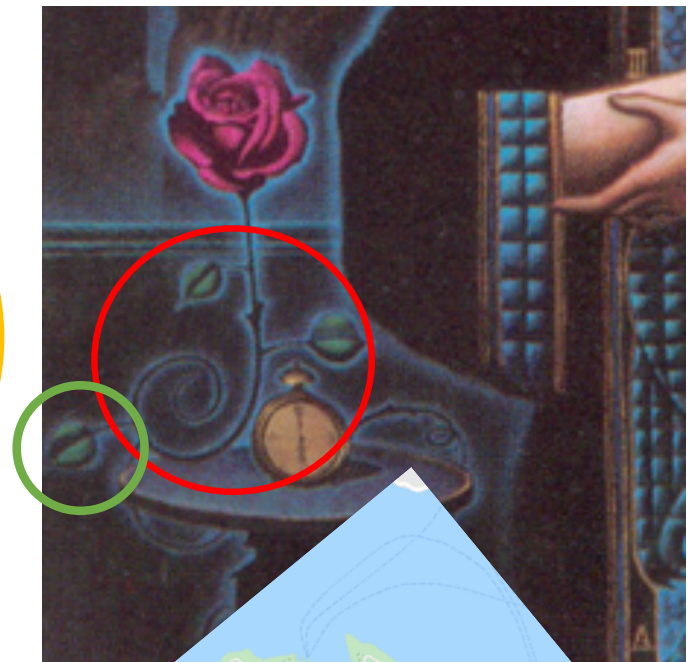
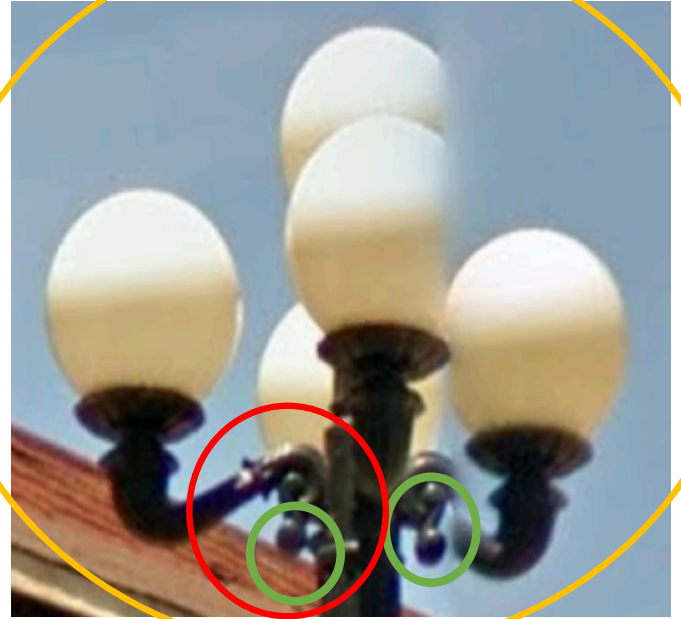
Suhy's San Francisco Casque Solve of The Secret



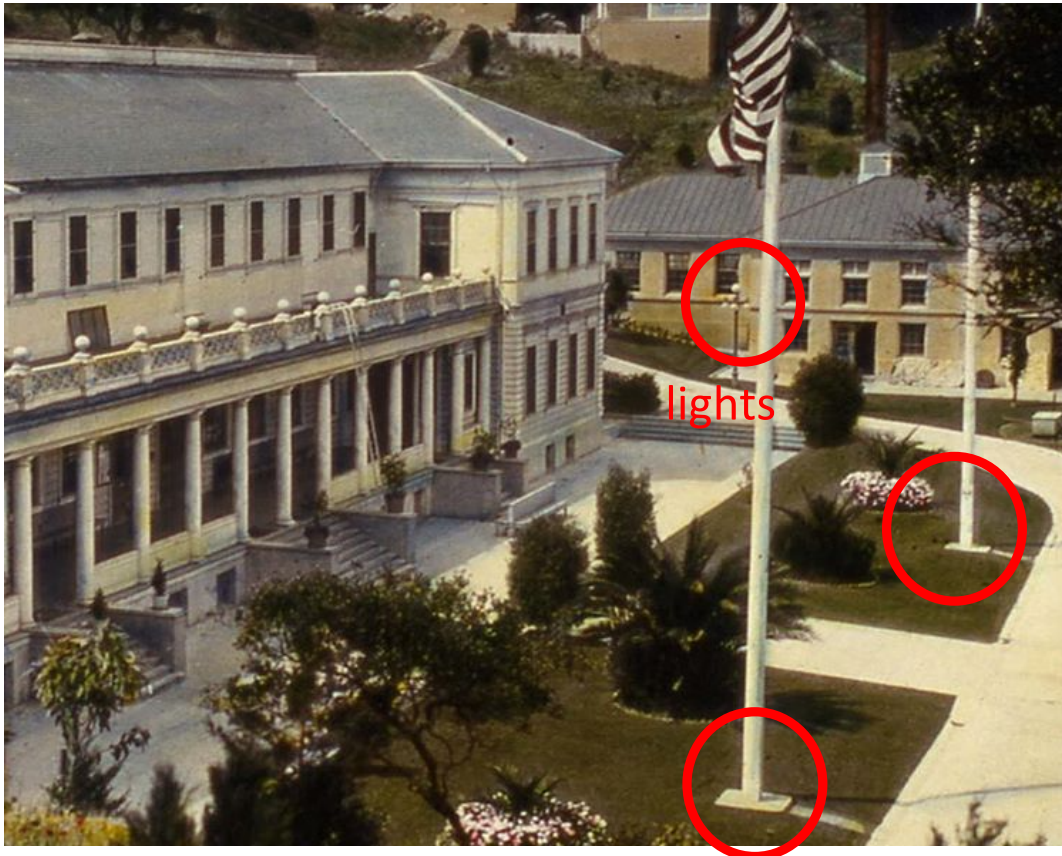
Arms
folded
position
shaped
like bell



Suhy's San Francisco Casque Solve of The Secret

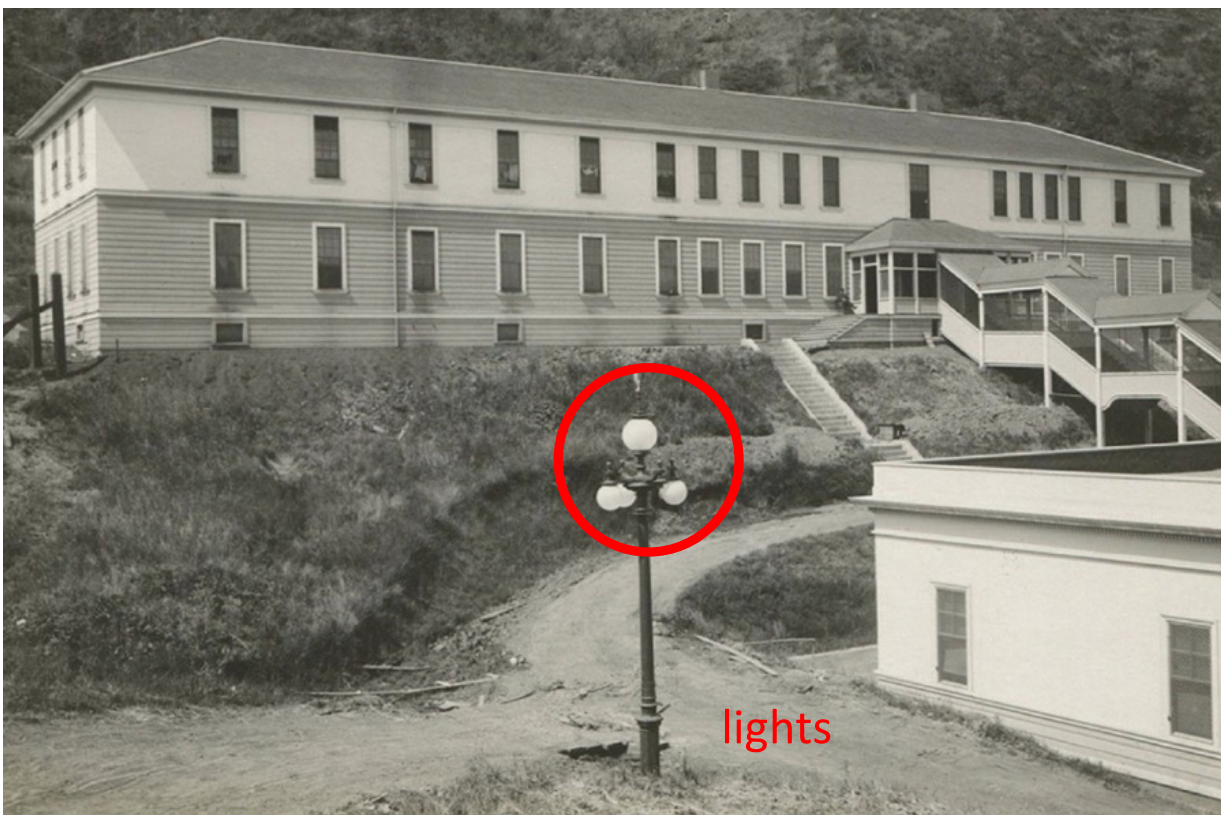


Suhy's San Francisco Casque Solve of The Secret



Flagpoles
"giant pole"

Old view of administration building before it burnt down



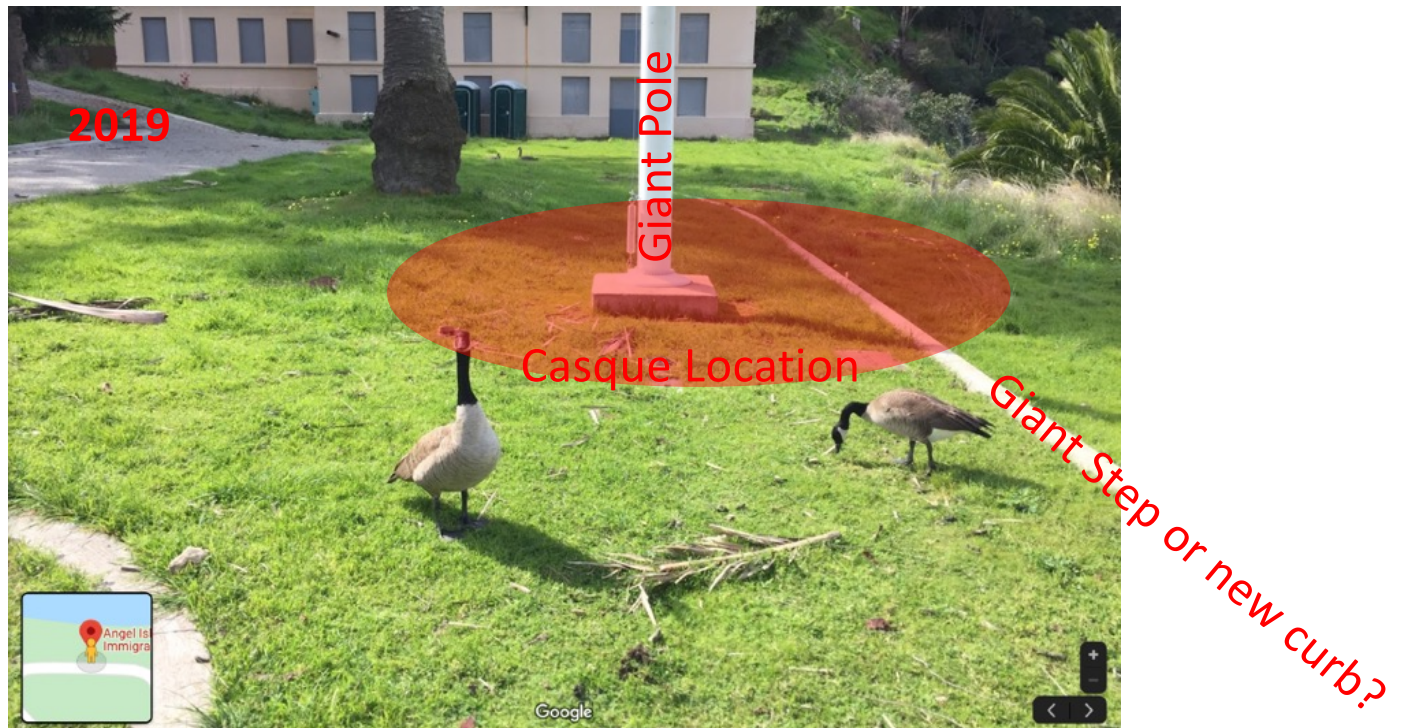
Old view of detention barracks

Suhy's San Francisco Casque Solve of The Secret



Red shaded / star areas likely casque burial site

Suhy's San Francisco Casque Solve of The Secret



Although, not completely sure the giant step was there in 1982 (thus casque may be on other side). See picture below from 2005

Red shaded areas likely casque burial site



More likely burial spot since the other flag pole is near road

Don Bain's 360° Panoramas
Panoramas of California North of the Golden Gate

2005



Red shaded areas likely casque burial

2019



Suhy's San Francisco Casque Solve of The Secret



Restored immigration barracks



Date of grounds and barracks restoration

Suhy's San Francisco Casque Solve of The Secret

China, and some would commit suicide - either before leaving and or on the voyage back to their homeland.^[11]

Many of the detainees turned to poetry as expression, spilling their emotions onto the very walls that contained them. Many of these poems were written in pencil and ink, or in brush, and then carved into the wooden walls or floors.^[12] Some of the poems are bitter and angry, placid and contemplative, or even hopeful.

America has power, but not justice.
In prison, we were victimized as if we were guilty.
Given no opportunity to explain, it was really brutal.
I bow my head in reflection but there is nothing I can do.

Another example:

I thoroughly hate the barbarians because they do not respect justice.
They continually promulgate harsh laws to show off their prowess.
They oppress the overseas Chinese and also violate treaties.
They examine for hookworms and practice hundreds of despotic acts.

A more hopeful example:

Twice I have passed through the blue ocean, experienced the wind and dust of journey.
Confinement in the wooden building has pained me doubly.
With a weak country, we must all join together in urgent effort.
It depends on all of us together to roll back the wild wave.

https://en.wikipedia.org/wiki/Angel_Island_Immigration_Station